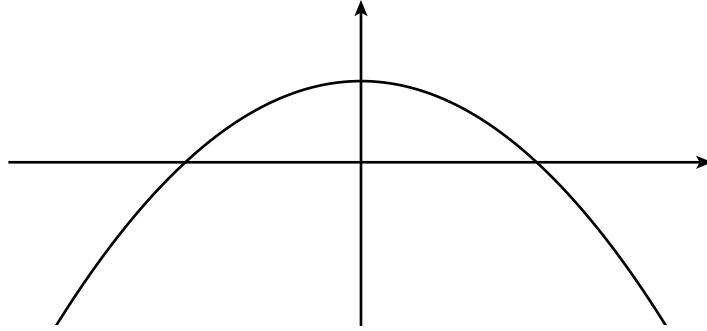


1. For the function $f(x) = 1/x$ compute the derivative function from the definition using limits.

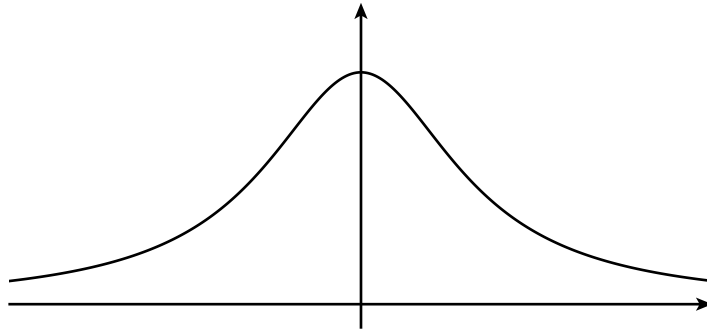
2. Find the equation of the tangent line to the curve $y = 1/x$ at $x = 2$.

For each of the remaining problems I have sketched for you the graph of $f(x)$. Your job: sketch $f'(x)$.

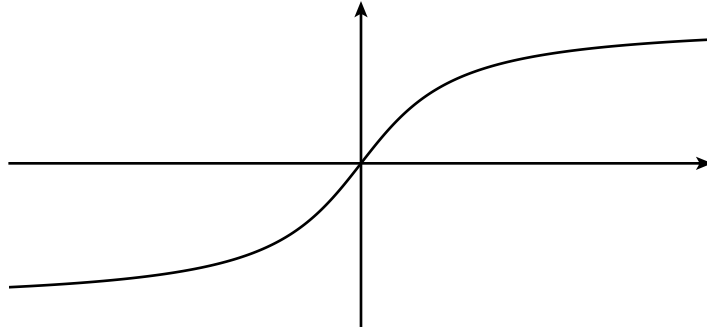
3.



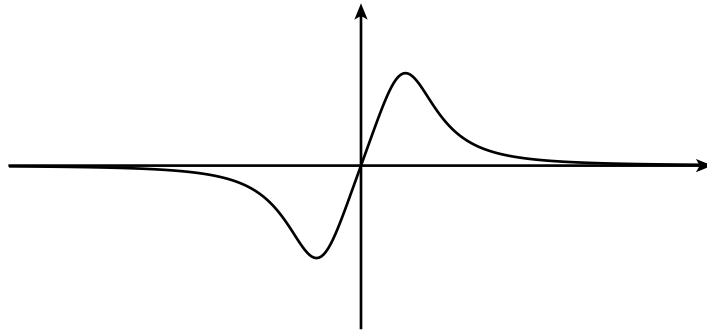
4.



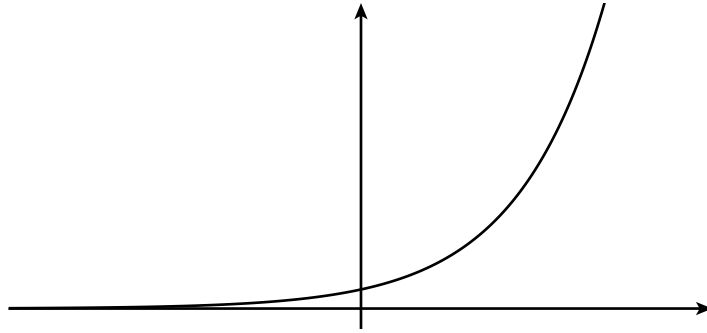
5.



6.



7.



8.

