

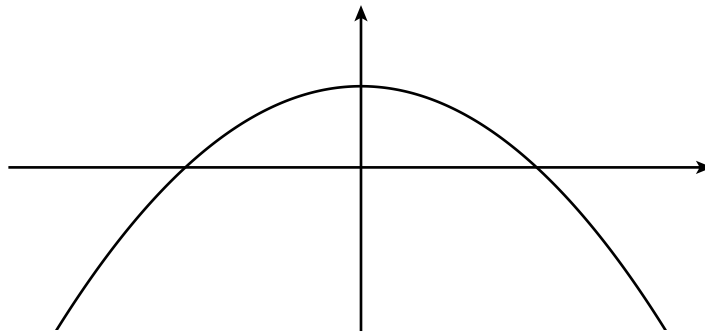
1. For the function  $f(x) = 1/x$  compute the derivative function from the definition using limits.

2. Find the equation of the tangent line to the curve  $y = 1/x$  at  $x = 2$ .

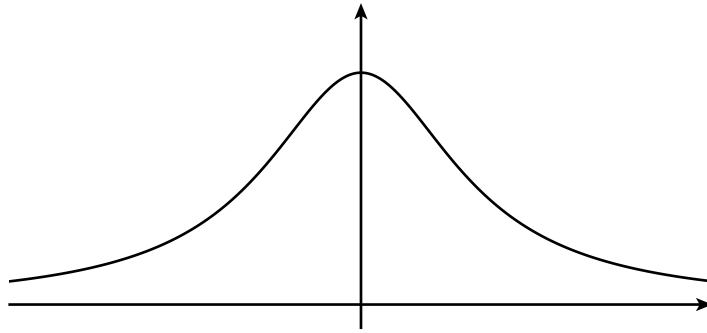
3. Use the derivative approximation at  $x = 2$  to estimate  $\frac{1}{2.1}$ .

For each of the remaining problems I have sketched for you the graph of  $f(x)$ . Your job: sketch  $f'(x)$ .

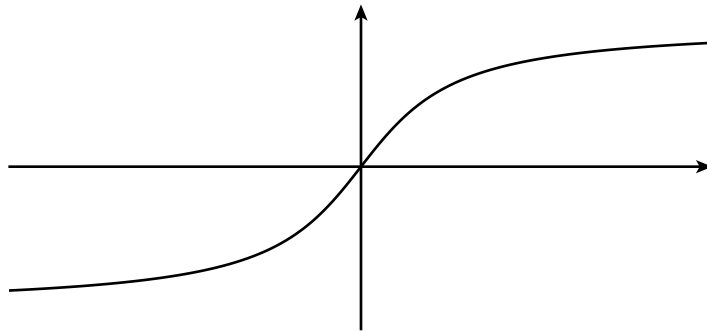
4.



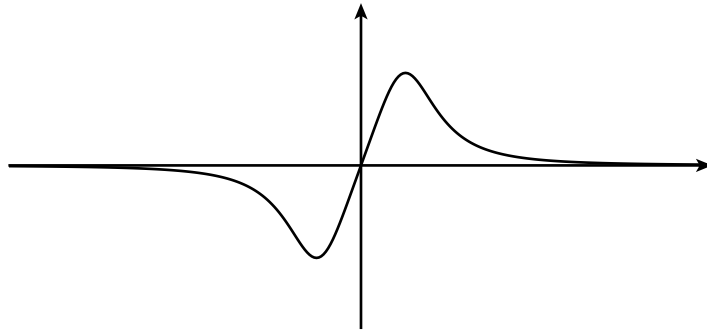
5.



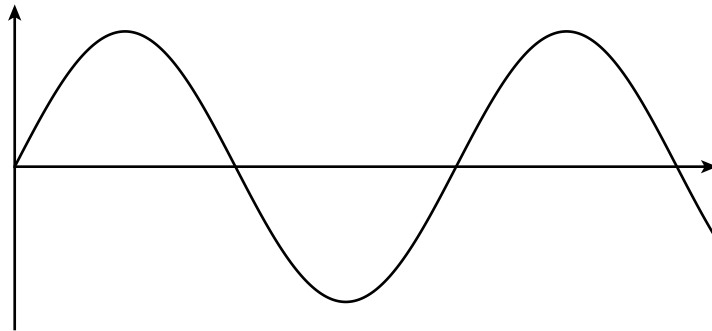
6.



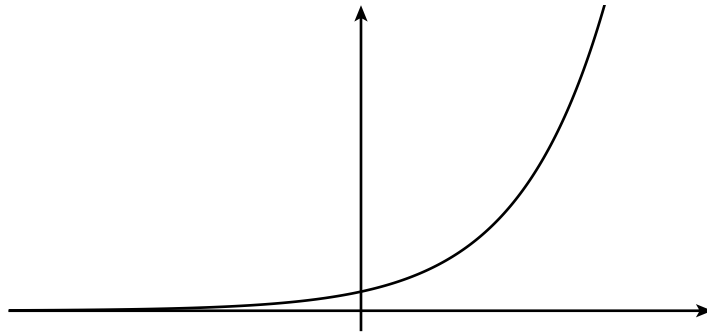
7.



8.



9.



10.

