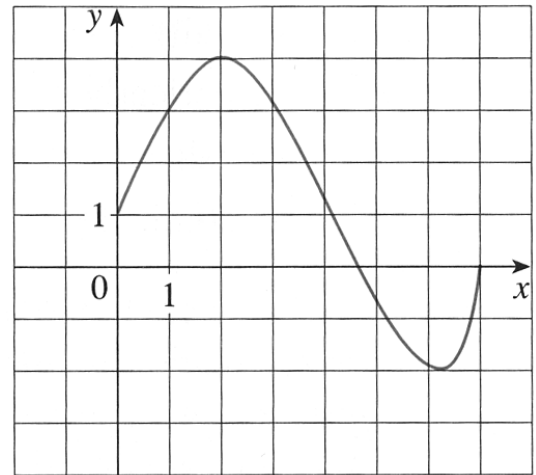


1. The graph of a function f is shown below. Find the following:

- $f(1)$ and $f(5)$
- the domain of f
- the range of f
- For which value of x is $f(x) = 4$?
- Where is f increasing?



2. Let $f(x) = 3x^2 - x + 2$. Find and simplify the following expressions.

- $f(2)$
- $f(a^2)$
- $[f(a)]^2$
- $\frac{f(2+h) - f(2)}{h}$
- $\frac{f(a+h) - f(a)}{h}$

3. Find the domain of each of the following functions. Use interval notation.

1. $f(x) = \frac{1}{x^4 - 16}$

2. $f(x) = \sqrt{x} + \sqrt{11 - x}$

3. $g(x) = \ln(x - 4)$

4. $h(x) = \frac{1}{\sqrt{x^2 - 5x - 6}}$

4. Graph each of the following piecewise defined functions.

a) $f(x) = \begin{cases} -1 & \text{if } x \geq 2 \\ 7 - 2x & \text{if } x < 2 \end{cases}$

b) $f(x) = \begin{cases} x + 1 & \text{if } x \leq -1 \\ x^2 & \text{if } x > -1 \end{cases}$